

Phone Alone Version 2.00 User Guide

for S60 v3.0 Devices

**Nokia 3250 / 5500S / E50 / E60 / E61 / E61i / E62 / E65 / E70 / N71 / N73 /
N75 / N77 / N80 / N91 / N92 / N93 / N93i**

for S60 v3.1 Devices

**Nokia 5700 / 6110 Navigator / 6120 / 6121 / 6290 / N76 / N81 / N81 8GB /
N82 / N95 / N95 8GB / E51 / E66 / E71 / E90**

for S60 v3.2 Devices

Nokia 5320 XpressMusic / 6210 Navigator / 6220 / N78 / N96

The content of this user guide is up to date on the released date. Mobisophy Technologies, Inc. reserves the rights to change any feature of this software printed in this user guide in future.

Nokia © is a trademark of Nokia Corporation.

Copyright © 2007-2008, Mobisophy Technologies, Inc. All right reserved.

Oct, 2008

Catalog

1. Starting Phone Alone	2
2. Main.....	3
3. Remote control	5
<u>3-1</u> Answering machine:	5
<u>3-2</u> Forwarding machine:	5
4. Data protection.....	6
5. Message box	7
6. Settings	8
7. Backup and Restore	10
8. Appendix 1: Voice Menu Content.....	11
9. Appendix 2:	14
<u>9-1</u> SMS Menu Content	14
<u>9-2</u> SMS Short Cuts	17

1. Starting Phone Alone

The first time Phone Alone be started, a wizard will guide you finish some necessary settings. The settings include “Remote control code”, “Runtime password”, “Anti-theft mode” and “Managing phone nbrs.”.

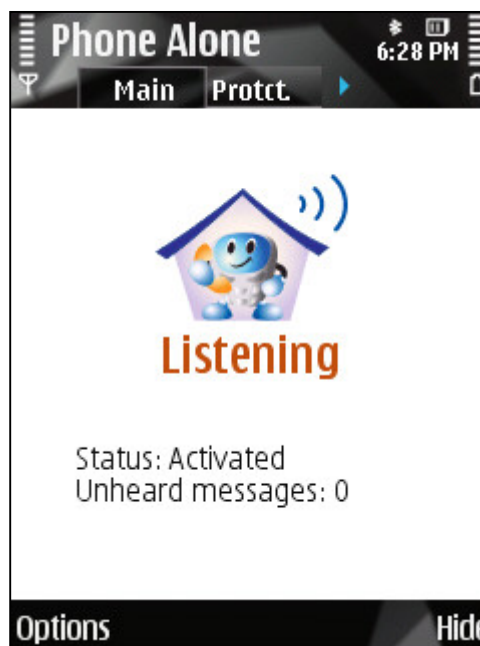
- **Remote control code:** Code for launching the remote control mode and locking the phone. When using voice menu, this code is need to activate the software. Or you can select “Activate” from the “Options” in main view to activate the software.
- **Runtime password:** If you set this option, the “Remote control code” will be asked every time Phone Alone becomes active.
- **Anti-theft mode:** If this mode is activated, a silent message or call will be sent to your “Managing phone nbrs.” after SIM card changing.
- **Silent mode:** If this mode is activated, no indicator will be displayed, and Phone Alone won’t be saw in the task list. No any notification will appear when Phone Alone is backing up or recovering data. And the controlling message will be silent and won’t be saved to the phone.
- **Managing phone nbrs.:** Numbers can control your phone. Any device with number in the list can control your phone after send your phone the “Remote control code” via SMS.

The default status will be “Listening” after activate. Other settings can be modified from the main menu, or following the managing voice command.



2. Main

- **Activate:** Input “Remote control code” to activate Phone Alone. The default status is “Listening”
- **Deactivate:** Input “Remote control code” to exit the remote control mode.
- **Play locally:** Listen the sound effect of “Answering machine”, “Managing voice menu” and “Antitheft menu”.
 1. Answering machine: The voice guide for callers when the mode “Answering machine” is active.
 2. Managing voice menu: Managing menu for voice. You can set the processing mode for incoming calls and complete other operations.
 3. Antitheft menu: Input “Remote control code” to protect your data of lock/unlock your phone.
- **Disable SIM chg. notif.:** If this option is not set, Phone Alone will warn your “Managing phone nbrs.” of anti-thief after SIN card changing.
- **Data protection:** Prevent your contacts, information, pictures, audios and videos from others. See chapter 4 “Data protection” for details.
- **Message box:** See all your voice messages here.
- **Lock phone:** After lock, the user can do nothing with the phone, even answer a call. “Remote control code” is needed to unlock.
- **Settings:** See chapter 6.
- **Hide:** Send Phone Alone to background.
- **Help:** Online help for Phone Alone.
- **Register:** Register Phone Alone to your phone. Internet connection is needed when registering.
- **Unregister:** Unregister Phone Alone from your phone. After unregistration, the installed Phone Alone will return to trial, and the license can be reused.
- **About:** The product’s name, version, copyright and etc.



- **Exit:** Exit Phone Alone.

3. Remote control

When the remote control mode is active, Phone Alone will listen the incoming calls and messages. So you can use any number in the “Managing phone nbrs.” call your phone. Then following the guide from voice menu, input “Remote control code” and change the mode to “Answering machine” or “Forwarding machine” (see 3-1 and 3-2 for details). Or send a message of “Remote control code” to control your phone. “Answering machine” is for the situation you forget your phone and no any other available phone. Phone Alone will guide the callers leave messages for you. “Forwarding machine” is for the situation you forget your phone but there’s another phone available. You can divert all incoming calls to a phone currently usable.

3-1 Answering machine:

When called by a number from “Managing phone nbrs.”, Phone Alone will guide the caller input “Remot control code” to enter managing voice menu. After that the caller can switch mode, listen voice messages, retrieve contacts , lock/unlock phone and etc. When called by a number not from “Managing phone nbrs.”, Phone Alone will answered through answering machine. The caller can leave a message or input “Remote control code”+”#” to enter “Managing voice menu”.

3-2 Forwarding machine:

When called by a number from “Managing phone nbrs.”, Phone Alone will ask for “Remote control code” to enter “Managing voice menu”. When called by a number not from “Managing phone nbrs.”, Phone Alone will divert the call to a number you set in “Managing voice menu”.

Notice:

1. Because of the hardware’s limitation, you can press any key only after the voice guide end. Too early key press will lead to key lost or “key error” or “key timeout”. When continuous key error/timeout up to 3 times, Phone Alone will end the call.
2. Call divert need your operator’s support. If your phone didn’t apply this service, you cannot use the mode “Forwarding machine”.

4. Data protection

Prevent your contacts, information, pictures, audios and videos from unwanted check. The “information” mentioned above only refers to the content in “Inbox” and “Sent”, others like drafts will not be protected.

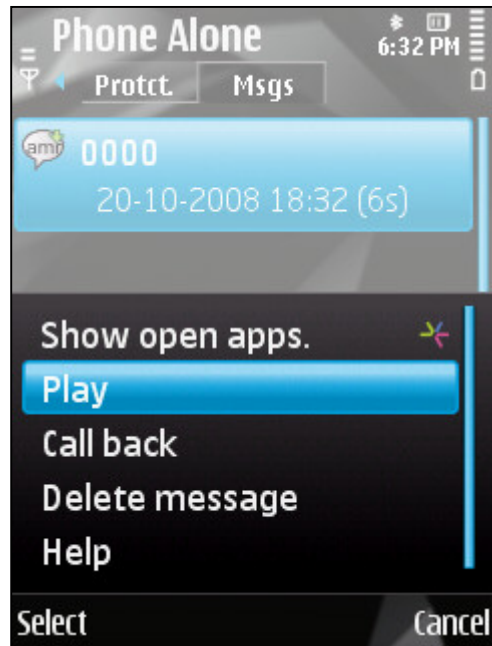
You can select “Protect all types” or “Protect current type”. “Protect current type” will only protect the focused data type. “Protect all types” will protect all the data types lists here.

Notice: If you press “Cancel” when Phone Alone is protecting data, only the data covered before cancel will be protected. It’s the same when recovering data.



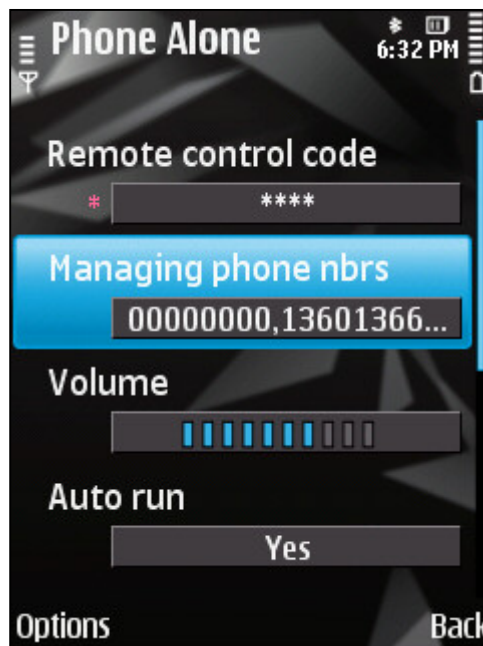
5. Message box

Listen the voice messages left by callers. You can play, call back or delete a message. The max period of a message is 120s.



6. Settings

- **Remote control code:** Set or change the “Remote control code”.
- **Managing phone nbrs:** You can enter “Managing voice menu” and control your phone by calling it from these numbers. Up to 3 numbers can be set.
- **Volume:** The volume for local voice menu.
- **Auto run:** Make Phone Alone auto run after your phone boot up.
- **Runtime password:** If set as “yes”, you must enter “Remote control code” every time Phone Alone returns to foreground.
- **Display quick hints:** Display hints when operating.
- **Messages location:** Store voice messages to phone memory or memory card.
- **Anti-theft and protection:**
 - ◆ **Anti-theft by SIM chg.:** Get notification after SIM being changed.
 - ◆ **Anti-theft notif. method:** Send a call or a message to the number in “Managing phone nbrs.” After SIM changing.
 - ◆ **Notif. phone numbers:** Inform which number after SIM changing. When running first time, “Managing phone nbrs.” will be set as “Notif. phone numbers”.
 - ◆ **Anti-theft data Protct.:** Phone Alone will protect your data if no in time response after SIM changing.
 - ◆ **Data protct. countdown:** The delay for data protecting after SIM changing.
 - ◆ **Silent mode:** If this mode is activated, no indicator will be displayed, and Phone Alone won't be saw in the task list. No any notification will appear when Phone Alone is backing up or recovering data. And the controlling message will be silent and won't be saved to the phone.



Notice: When start anti-thief, the SIM used when Phone Alone runs first time will be treated as main SIM. Changing to any other SIM will cause anti-thief notification.

7. Backup and Restore

You can use Nokia PC Suite to backup and restore Phone Alone. After backup, make sure Phone Alone uninstalled completely. Otherwise it won't be recovered successfully after restore.

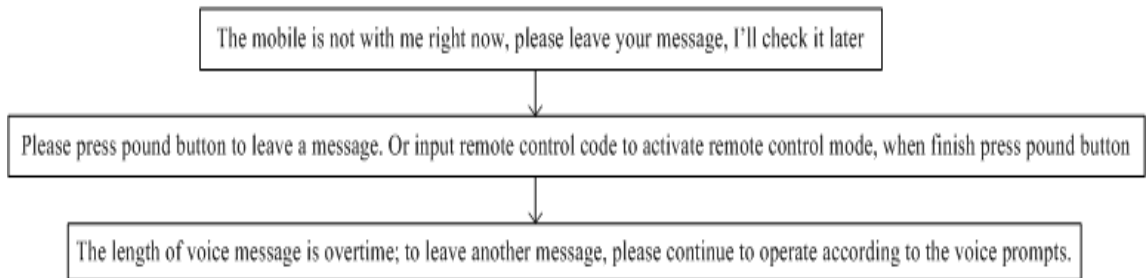
Notice:

Ask: How to uninstall Phone Alone successfully?

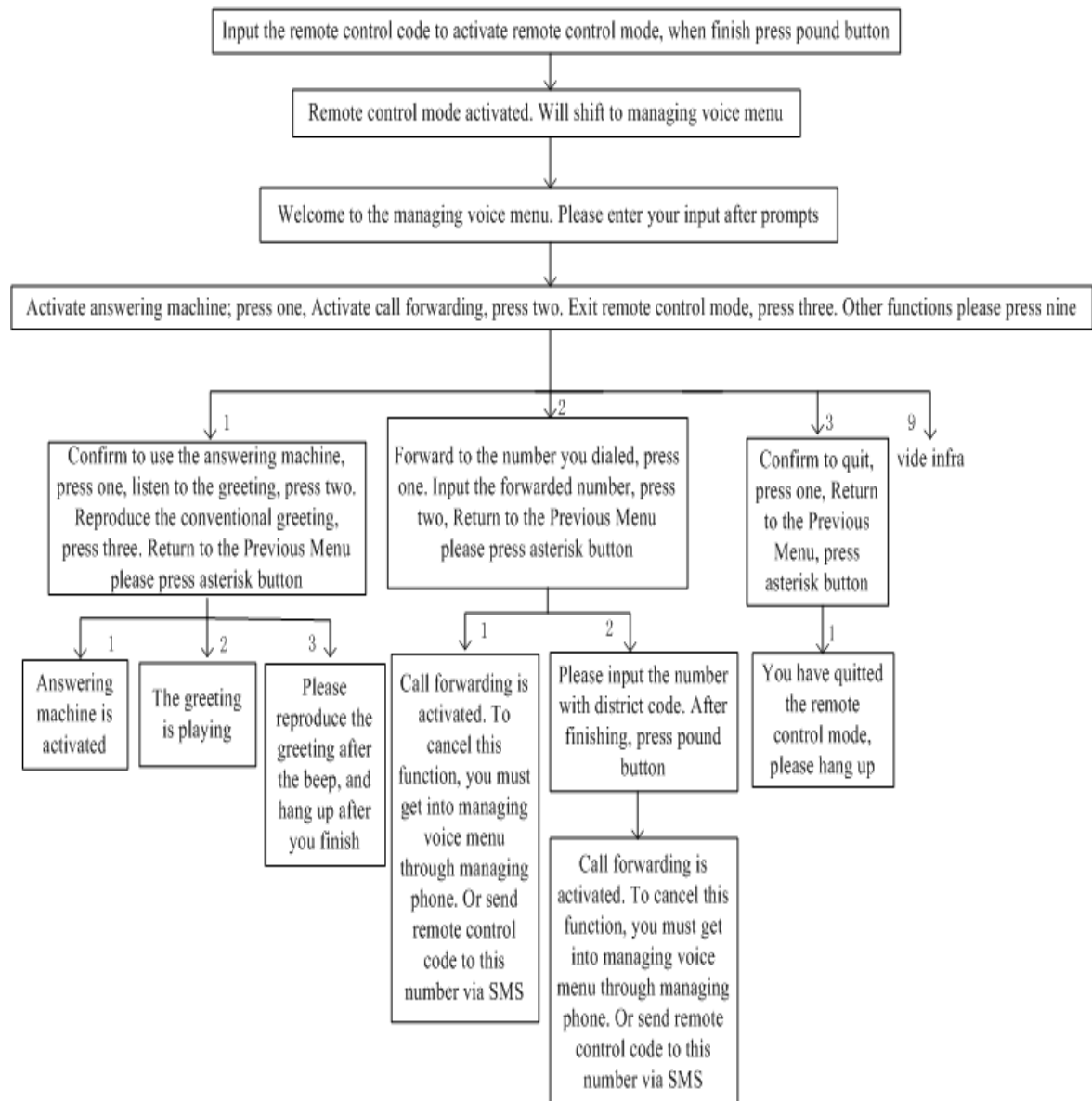
Answer: Enter "App. mgr.", then uninstall "Phone Alone", "Mobisophy Audio Server v2", "ApsServer v2" and "Mobisophy Utilities".

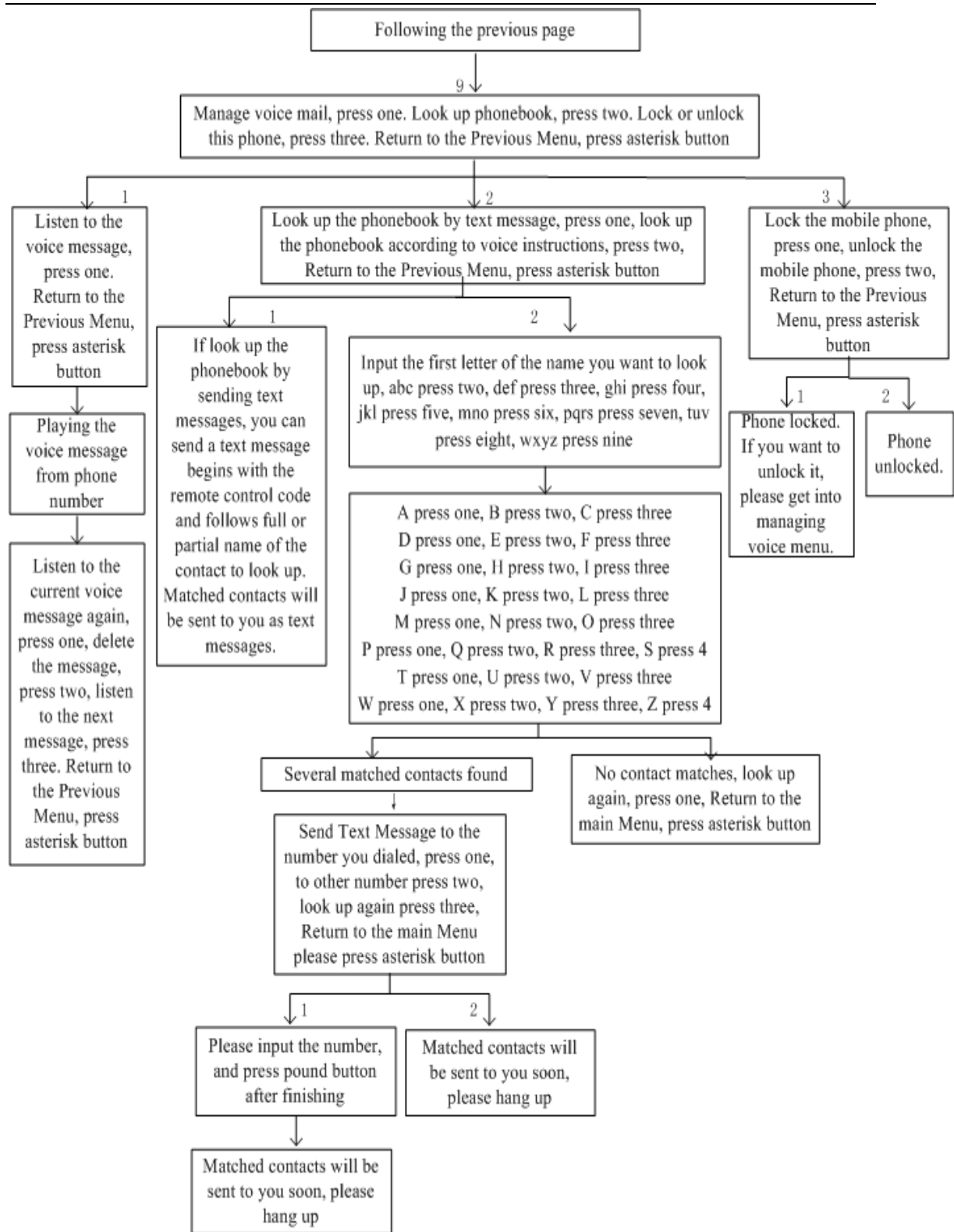
8. Appendix 1: Voice Menu Content

Answering machine

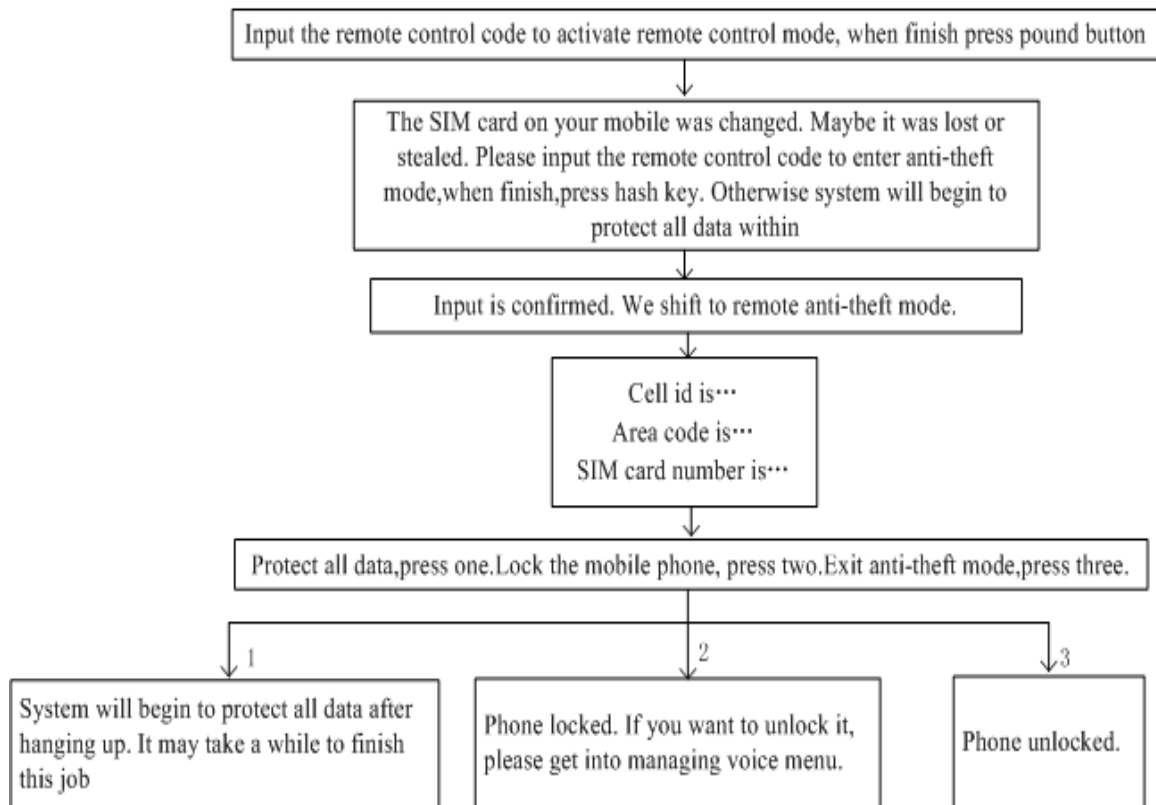


Managing voice menu



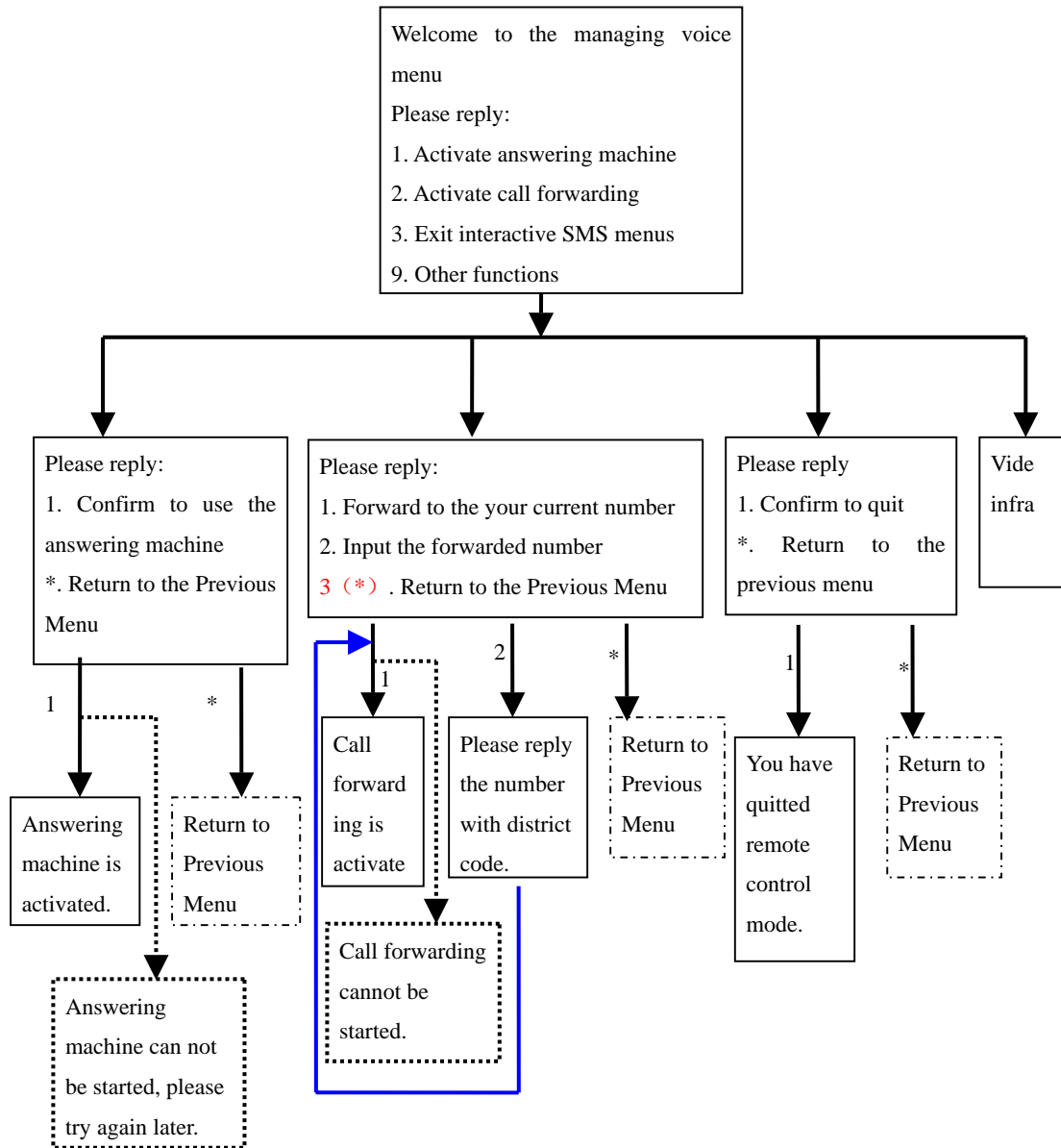


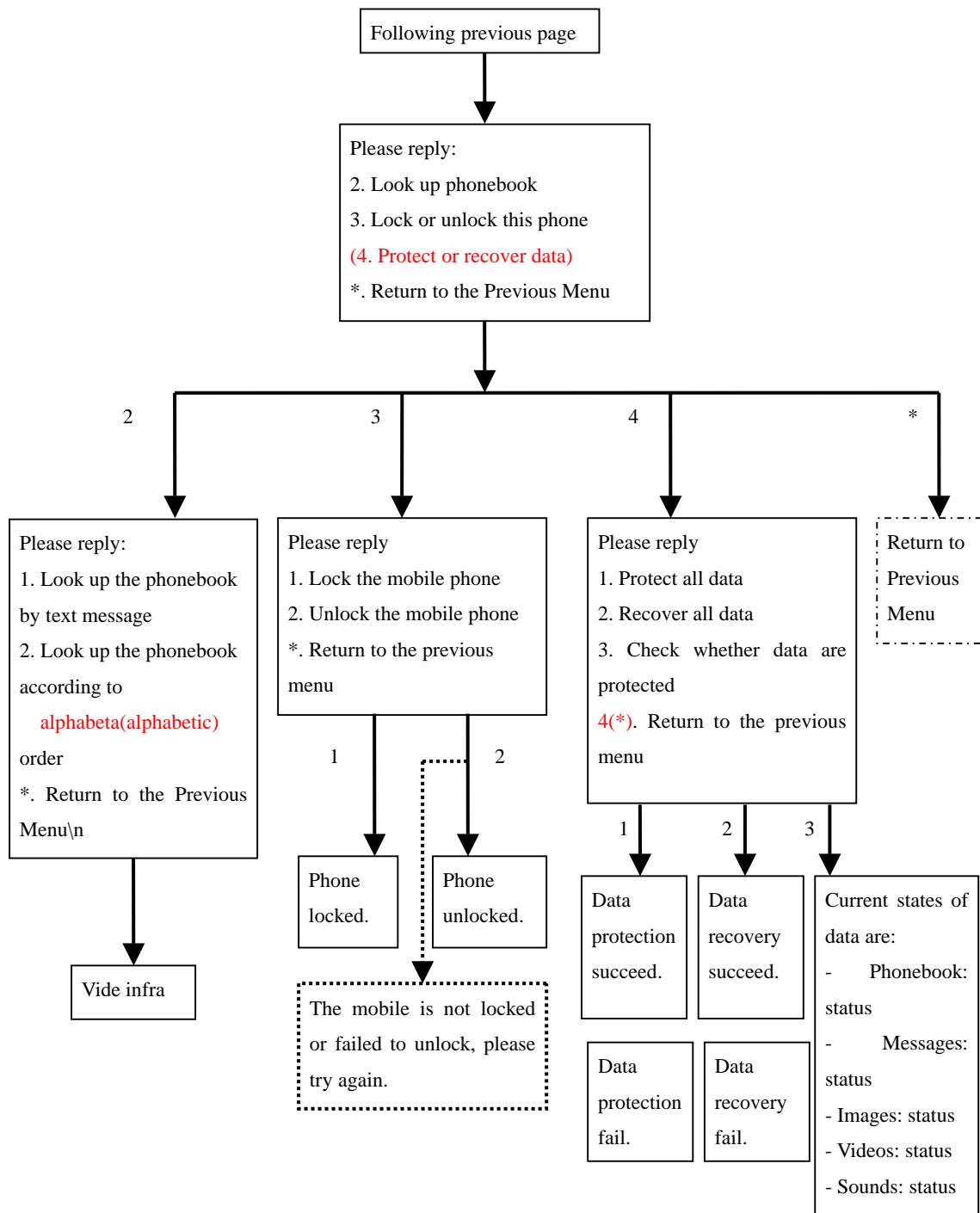
Anti Theft Mode

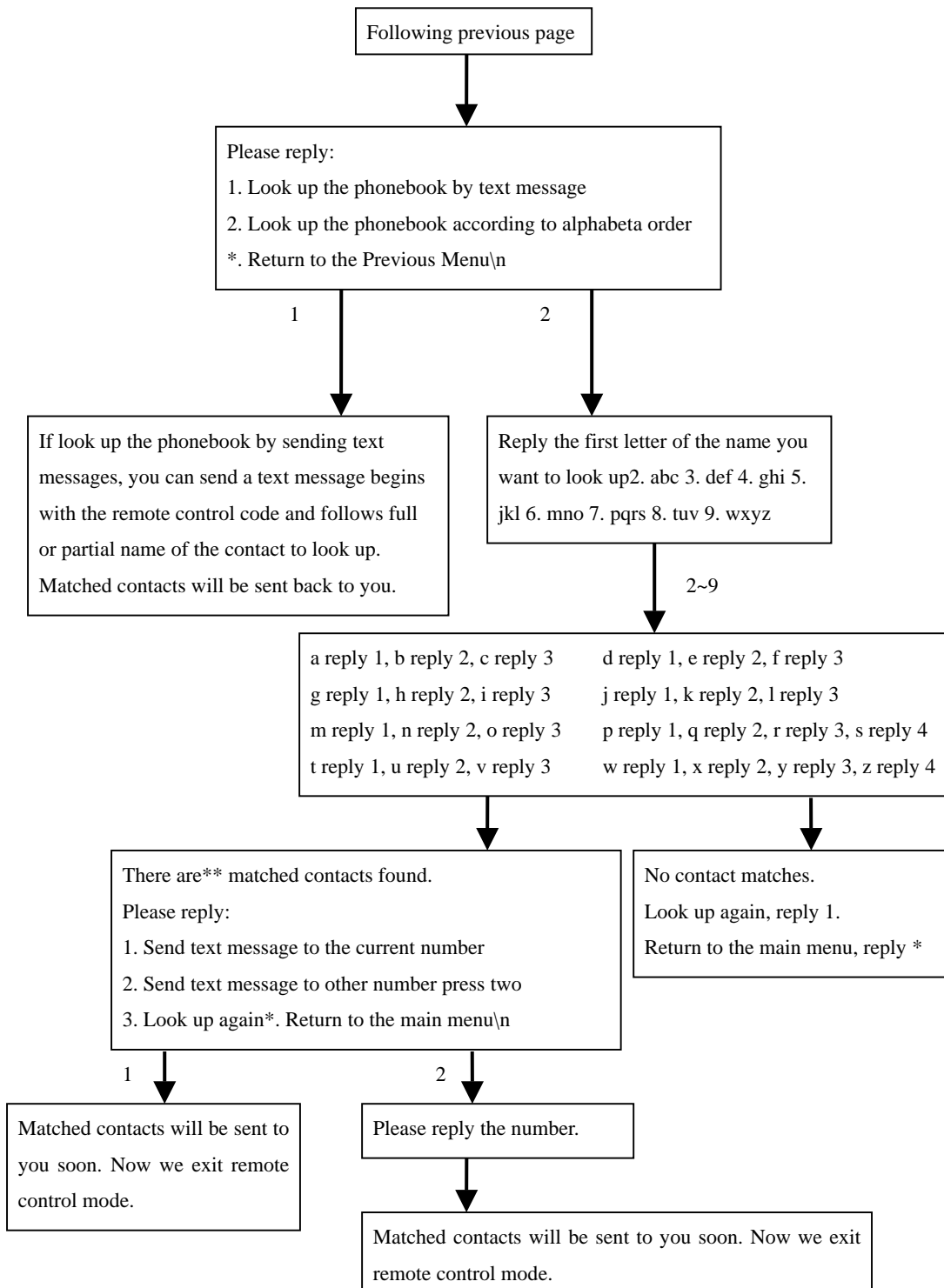


9. Appendix 2:

9-1 SMS Menu Content







9-2 SMS Short Cuts

am : Activate answering machine

fm1 : Divert to this phone

fm2 : Divert to another phone

lp : Lock

up : Unlock

dr : Exit remote control mode

pd : Protect data

rd : Recover data

qd : Query protected data type

at : Enter anti-theft mode

Notice:

Send "Remote control code"+"short cut" to your phone to start the corresponding function. For instance, if your "Remote control code" is "123123", and you want your phone act as an answering machine, you can just send a message of "123123am" to your phone. Another useful short cut is, you can send your phone "Remote control code"+ name to retrieve a contact record. For instance, a message of "123123+Bruce" will make Phone Alone reply the contact record of Bruce to you.